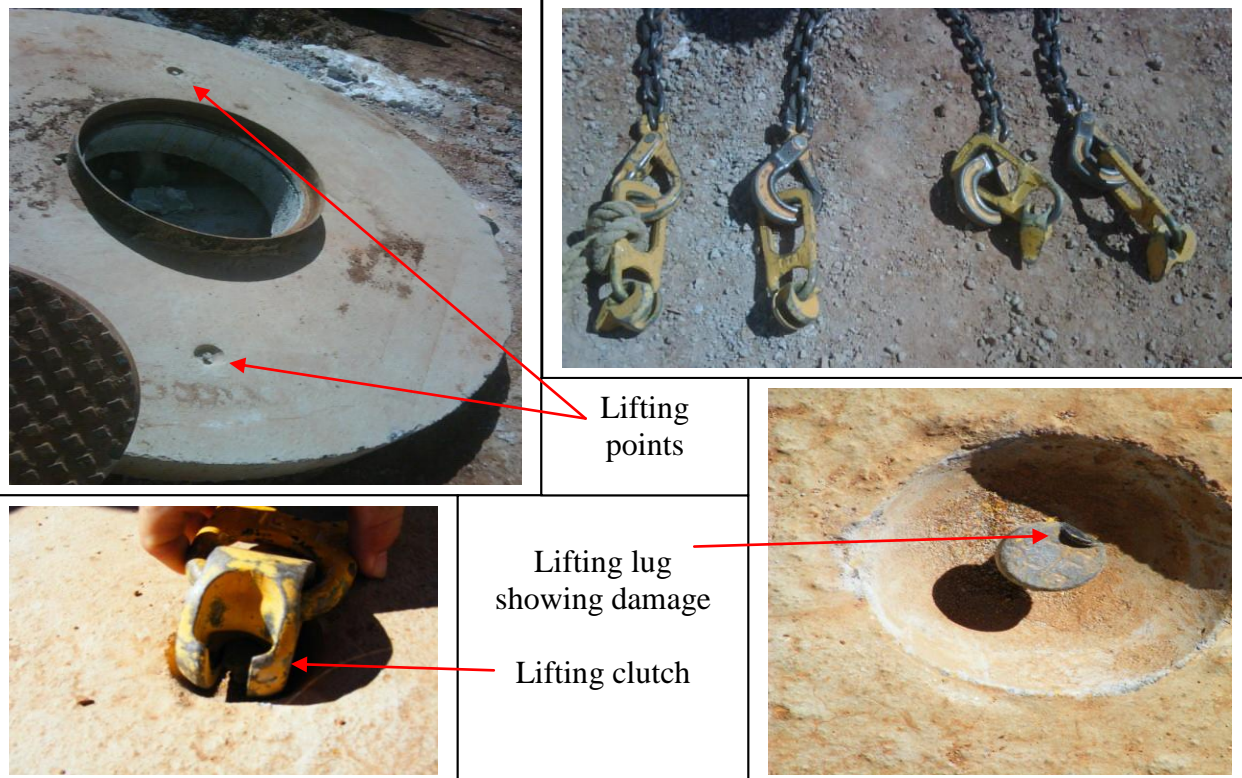


BACKGROUND:

A fatality has occurred when a lifting clutch, which made up part of a lifting assembly, has released without warning when unloading a prefabricated concrete gatic lid. The lid has struck the rigger conducting the lift which has resulted in him being fatally injured. The lid weighed approximately 800kg

Initial investigations have revealed possible contributing factors which may have lead to the incident.

- The design of the lifting point recess allowed for a larger clutch to be used which permitted excessive movement between the lifting insert lug and the clutch.
- Due to the diameter and weight of the lid, an additional third lifting point could have been incorporated into the design to offer better control when lifting.



RECOMMENDATIONS:

- Ensure that all lifting gear is tagged and checked periodically as per Australian Standards
- Establish a suitable exclusion zone if practicable prior to any crane operation.
- Ensure that the appropriate lifting gear is used for each lifting situation.
- When using any prefabricated concrete products which have lifting inserts ensure that the manufacturer's documentation is on site and checked prior to lifting.

For further information contact Steve McCann:
 Mob: 0488 102 297
 Email: smccann@cfmeuwa.com